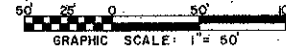
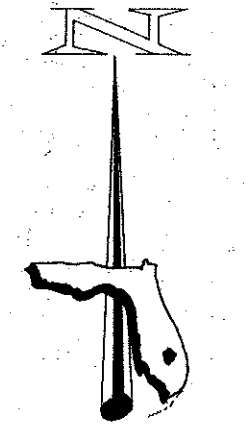


BOCA RANCHO PLAT NO. 2
 IN THE NW 1/4 OF SECTION 30, TOWNSHIP 47 SOUTH, RANGE 42 EAST
 AND BEING A REPLAT OF PART OF TRACT 15, BLOCK 81,
 PALM BEACH FARMS CO. PLAT NO. 3 (P.B. 2, PG. 53)
 PALM BEACH COUNTY, FLORIDA
 IN TWO SHEETS — SHEET NO. TWO

PALM BEACH FARMS COMPANY
 PLAT NO. 3 P.B. 2, PG. 53

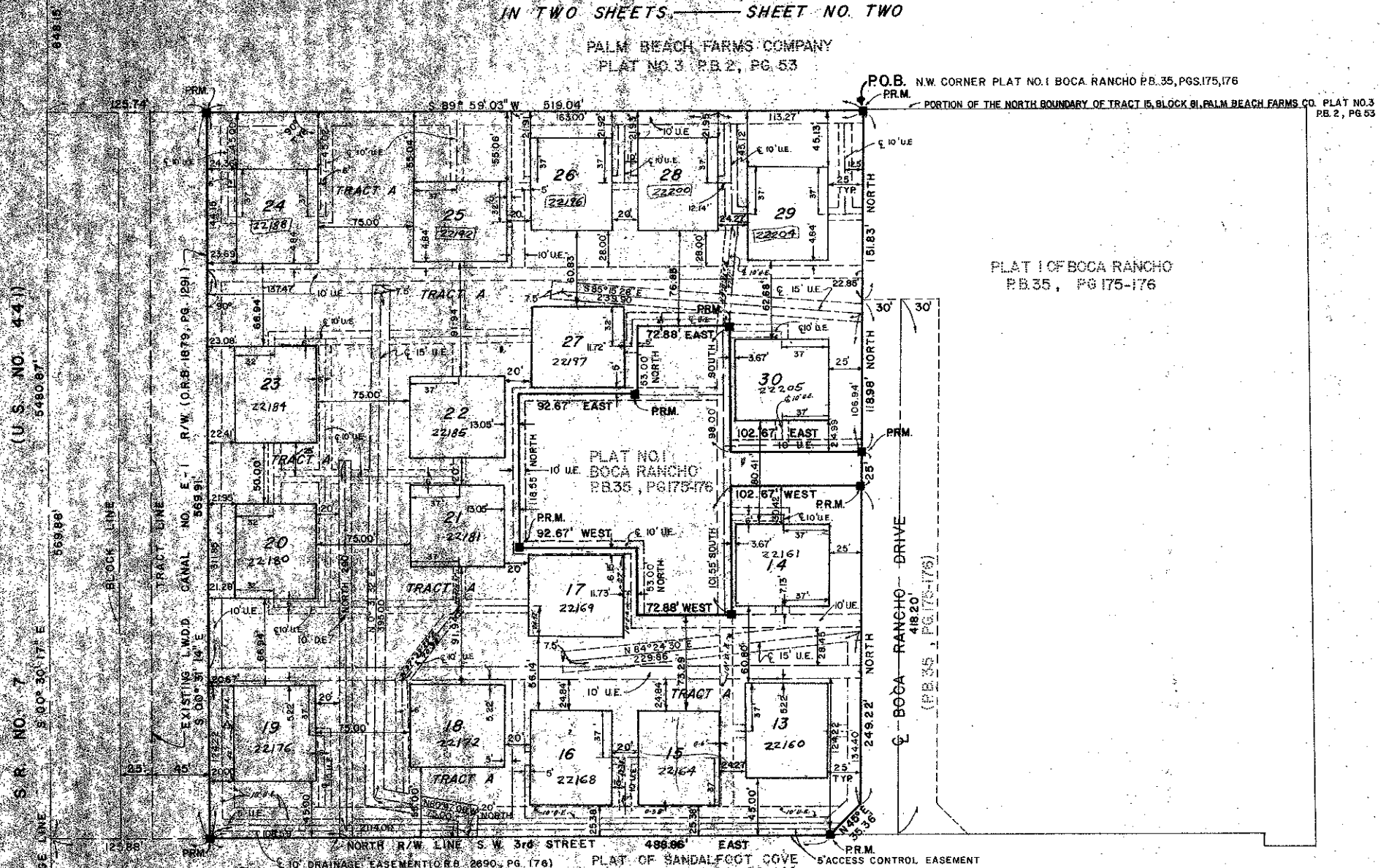


24 19
25 30

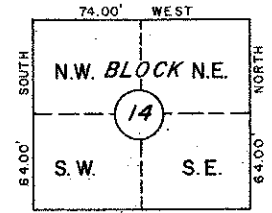
(U.S. NO. 441)

S.R. NO. 7

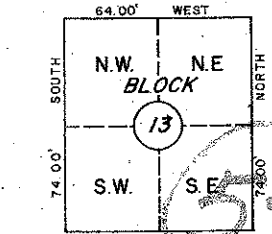
25 30
36 31



LEGEND
 D.E. INDICATES DRAINAGE EASEMENT
 U.E. INDICATES UTILITY EASEMENT



TYPICAL DETAIL FOR
 BLOCKS 14, 17, 18, 21, 22,
 25, 27, 30



TYPICAL DETAIL FOR
 BLOCKS 13, 15, 16, 19, 20, 23,
 24, 26, 28, 29

FLOOD ZONE 'AO'
 DEPTH 1'

1000-084

- NOTES
1. TIES FROM BLOCKS TO THE BOUNDARIES OF THE PLAT ARE AT RIGHT ANGLES TO SAID BOUNDARIES.
 2. BEARINGS ARE IN THE MERIDIAN OF PLAT NO. 1 OF BOCA RANCHO, PLAT BOOK 35, PAGE 175 THROUGH 176.
 3. NO BUILDING OR ANY KIND OF CONSTRUCTION OR TREES SHALL BE PLACED WITHIN EASEMENTS.
 4. DRAINAGE EASEMENTS TAKE PRECEDENCE OVER UTILITY EASEMENTS.
 5. MAINTENANCE ACCESS RIGHTS ARE GRANTED OVER ALL TRACTS SHOWN HEREON FOR THE PURPOSE OF MAINTENANCE OF UTILITIES.

Boca Rancho Plat #2

178-66

FLORIDA SURVEYING & MAPPING, INC.	
REGISTERED LAND SURVEYORS	
WEST PALM BEACH, FLORIDA 33401	
1" = 50'	
TL-8-78	
MZA	
BOCA RANCHO-PLAT NO. 2	SHEET 2 OF 2